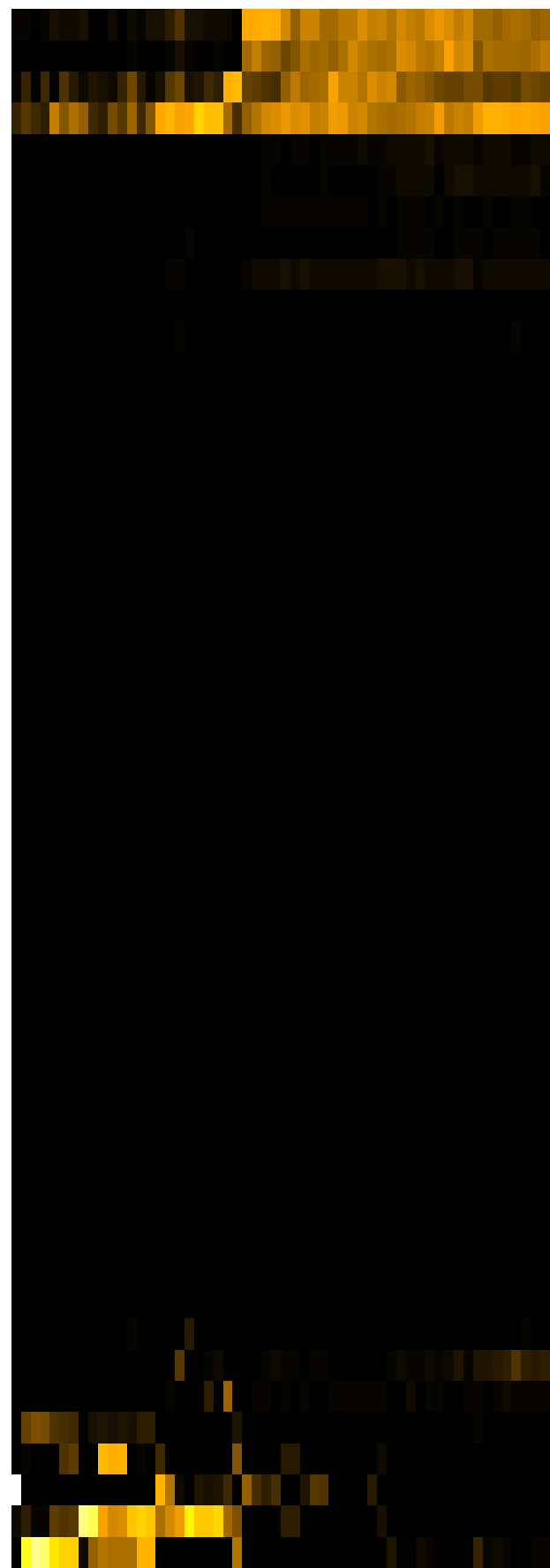
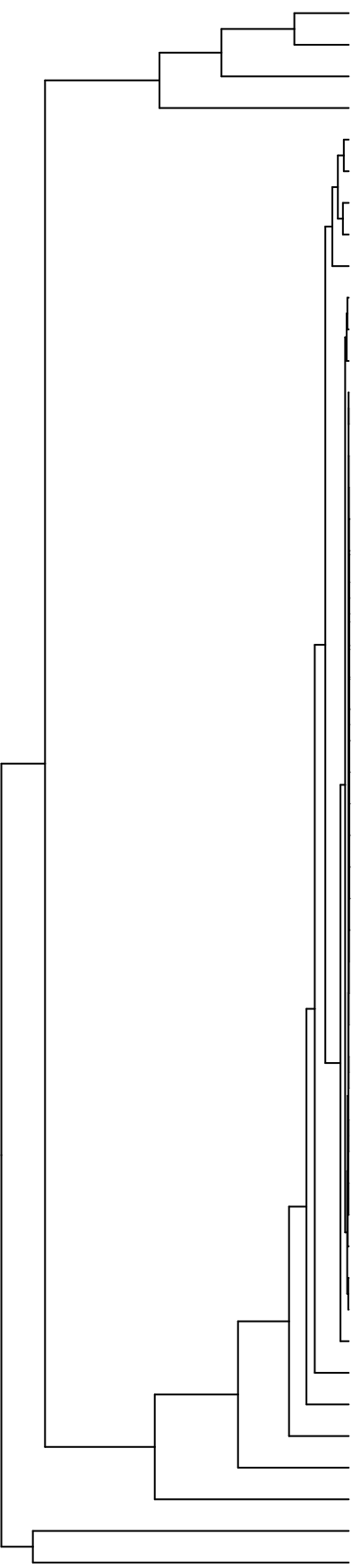


Group006
 H Final -PMA
 J Final -PMA



Veillonella
 Haemophilus
 Neisseria
 Streptococcus
 Eikenella
 Aggregatibacter
 Schaalia
 Gemella
 Granulicatella
 Leptotrichia
 Campylobacter
 Porphyromonas
 Lautropia
 Saccharibacteria_(TM7)_[G-1]
 Alloprevotella
 Cutibacterium
 Capnocytophaga
 Phyllobacterium
 Pseudomonas
 Acinetobacter
 Lachnospiraceae_[G-2]
 Serratia
 Novosphingobium
 Leifsonia
 Agrobacterium
 Sphingobium
 Riemeella
 Microbacterium
 Siccacidurans
 Saccharibacteria_(TM7)_[G-5]
 Acidovorax
 Absconditabacteria_(SR1)_[G-1]
 Saccharibacteria_(TM7)_[G-6]
 Lancefieldella
 Catonella
 Solobacterium
 Lachnoanaerobaculum
 Delftia
 Oribacterium
 Actinomyces
 Prevotella
 Stomatobaculum
 Staphylococcus
 Fusobacterium
 Rothia
 Salmonella
 Raoultella
 Enterobacter
 Klebsiella
 Citrobacter

F28914.S603
 F28914.S452
 F28914.S450
 F28914.S469
 F28914.S466
 F28914.S470
 F28914.S465
 F28914.S468
 F28914.S609
 F28914.S449
 F28914.S612
 F28914.S601
 F28914.S293
 F28914.S294
 F28914.S312
 F28914.S295
 F28914.S306
 F28914.S305
 F28914.S291
 F28914.S290
 F28914.S136
 F28914.S134
 F28914.S296
 F28914.S152
 F28914.S147
 F28914.S130
 F28914.S148
 F28914.S132

Genus

Samples